



# Curso: Como escribir un trabajo científico para que pueda ser publicado

Director: Dr. Pablo Contreras

Bibliografía con ayuda de software

Dr. Pablo Mingote

# Bibliografía: qué esperaríamos

- En la propia computadora
- Ordenar y clasificar
- Recuperar selectivamente

- Visualizar tipo fichas
- Individualizar posición física

- Introducir las citas al escribir
- Generar la lista bibliográfica
- Bajar las citas de PubMed



# Primera opción



R2D2

# Opción dos

- Programas que:
  - Sean una Base de Datos
  - En la propia computadora
  - Almacenen las citas bibliográficas
  - Indexadas por MeSH
  - Referencien las citas automáticamente al escribir (CWYW)\*

\* CWYW: Cite While You Write

# Base de Datos Médicas: Medline

- Repositorio de Información Científica
- Expresado en Citas Bibliográficas
- Clasificadas jerárquicamente
- Codificadas o indexadas
- Lenguaje Controlado (MeSH)
- Permite recuperación puntual por parámetros
- Actualmente Online (PubMed)

# MeSH: Medical Subject Headings

- Tesouro
- Lenguaje Controlado
- Indexa el Medline
- Descriptores
- Recuperación en varios niveles de especificidad

# Descriptores

Término y definición

Subencabezados

1 **Prostatic Neoplasms** Links  
Tumors or cancer of the PROSTATE.

Subheadings: This list includes those paired at least once with this heading in MEDLINE and may not reflect current rules for allowable combinations.

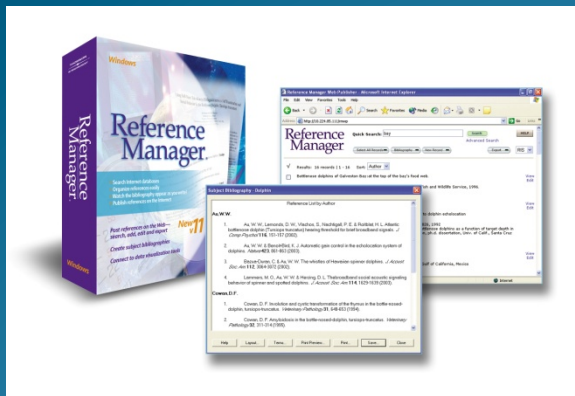
analysis  blood  blood supply  cerebrospinal fluid  chemically induced  chemistry  classification  complications  congenital  diagnosis  diet therapy  drug therapy  economics  embryology  enzymology  epidemiology  ethnology  etiology  genetics  history  immunology  metabolism  microbiology  mortality  nursing  parasitology  pathology  physiopathology  prevention and control  psychology  radiography  radionuclide imaging  radiotherapy  rehabilitation  secondary  secretion  surgery  therapy  transmission  ultrasonography  ultrastructure  urine  veterinary  virology

Restrict Search to Major Topic headings only.  
 Do Not Explode this term (i.e., do not include MeSH terms found below this term in the MeSH tree).

Delimitar / Scope

# ¿Qué es el RefMan / EndNote?

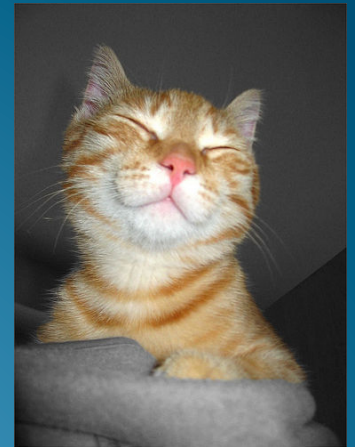
- Reference Manager / EndNote son Bases de Datos Personales





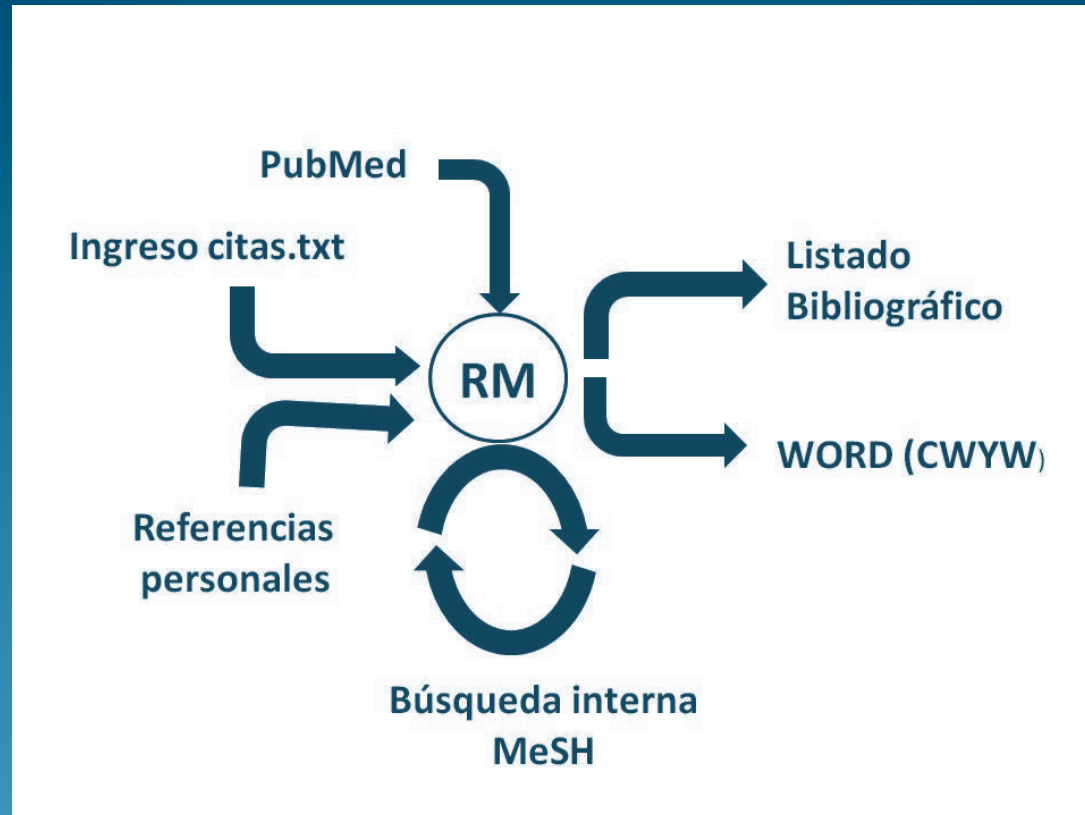
# ¿Qué hace RefMan?

- Almacena Citas Bibliográficas en la propia computadora.
- Insertar las citas en un documento mientras se escribe (CWYW).
- Búsqueda interna por MeSH.
- Ordena y da formato al listado Bibliográfico.



\* CWYW: Cite While You Write

# Circuito de las Referencias Bibliográficas



# ¿Dónde descargo RefMan?

Reference Manager

contact us | about us | what's new | **product info** | support & services | purchase | home

## Product Info

System Requirements  
Network Edition

### Quick Links

- Download a Free Trial
- Register Your Software
- Offer Product Suggestions
- Explore Training Options
- User Forum

## Reference Manager Trial Request Form

Use this form to request a Reference Manager Trial Version. After filling out the below information, you will be given a link to download from. Please note that all fields marked with a \* are required.

Are you a current user? \*  Yes  No

Country: \* Argentina

Your Name: \*

E-mail Address: \*

Phone Number: \*

Address 1: \*

Address 2:

Address 3:

City: \*

Region/Territory:

Postal Code: \*

\* How did you hear about Thomson products?  
Select One  Other:

\* Would you like us to send you more information by mail?  
 Yes  No

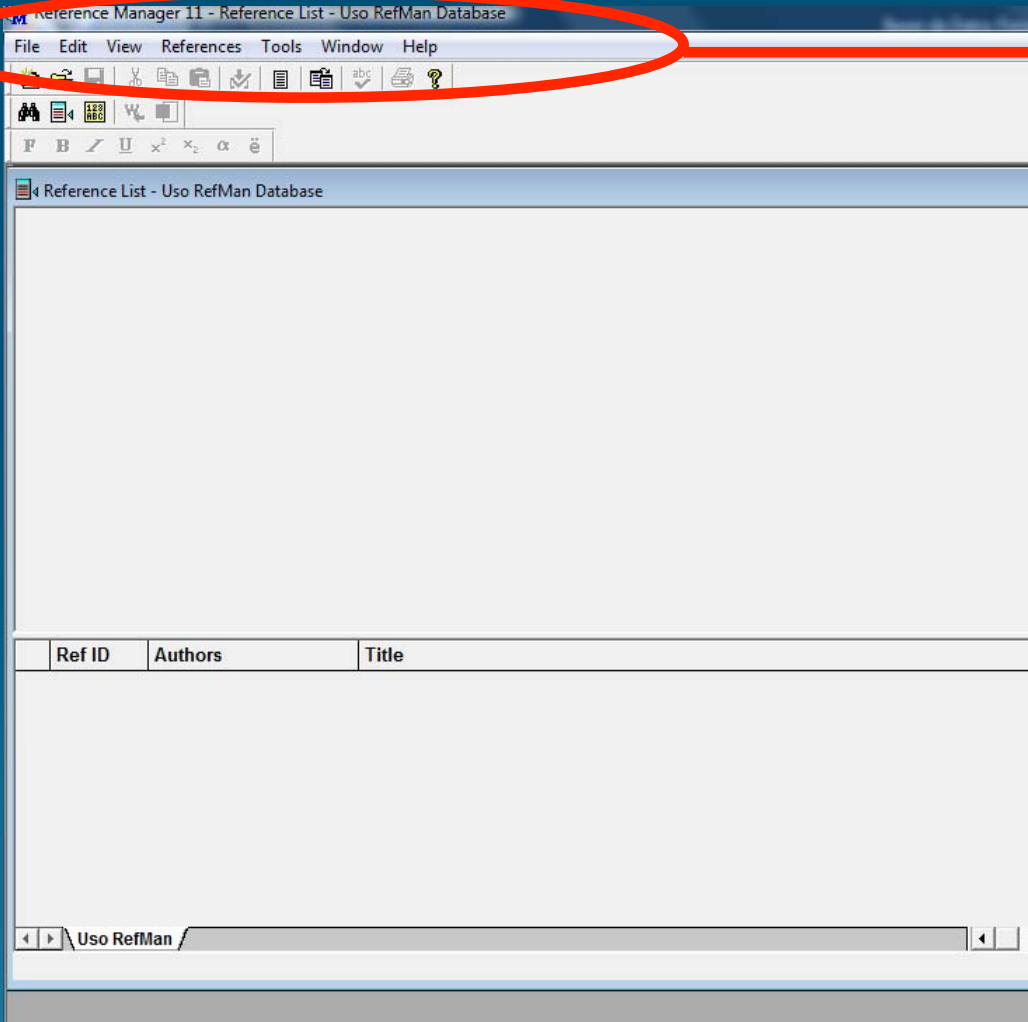
<http://www.risinc.com/rmdemo.asp?Country=Argentina>

# Reference Manager

Tutorial Visual



# Base de Datos Personal

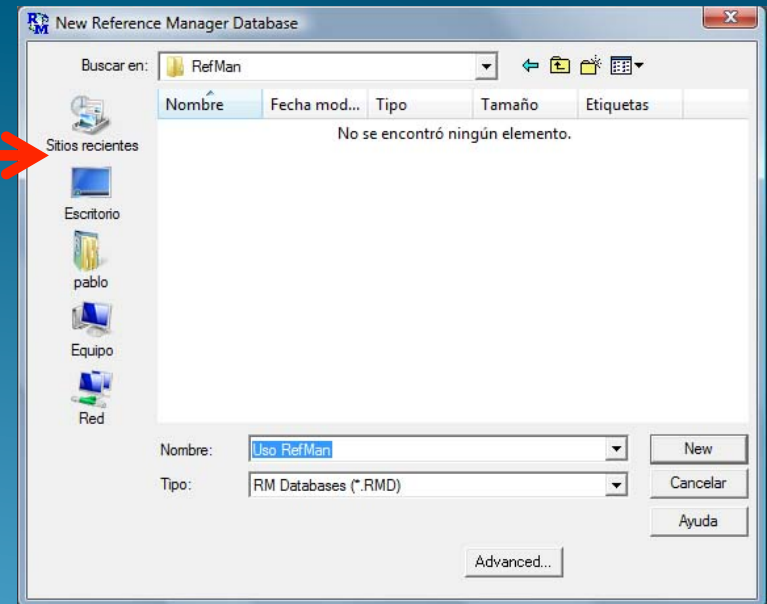
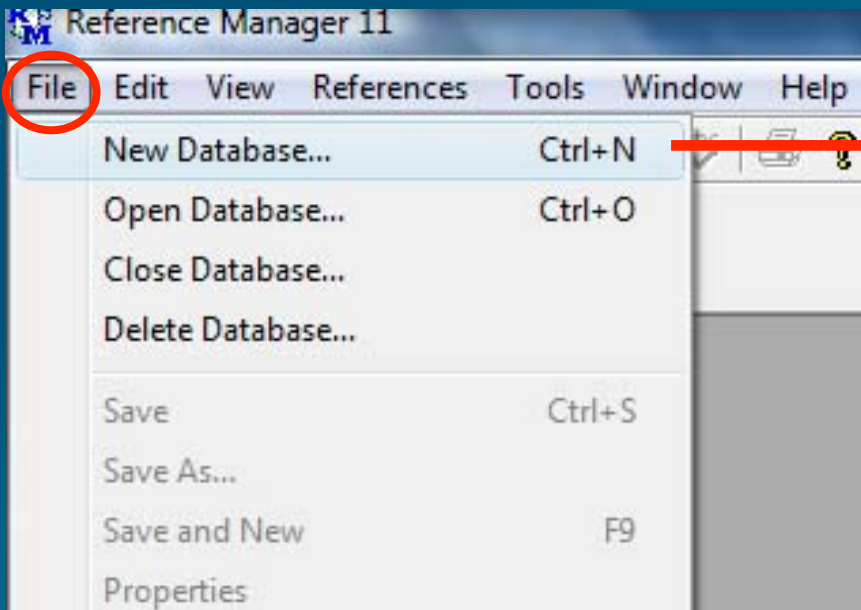


Herramientas

Referencia individual

Lista Referencias

# Creando la Base de Datos



# Importar Cita de PubMed

- Búsqueda Bibliográfica en PubMed
- Se debe identificar el UID de la cita
- Se lo copia al portapapeles
- En el RefMan se elije *Tools/ Internet Search*
- En la ventana, en la columna *Field* se abre lista popup y se selecciona UID
- En *Parameters* se pega el UID

# Identificando el UID

1: [Praxis \(Bern 1994\)](#). 2002 Oct 2;91(40):1645-50.

[EndNote 5 reference manager--functions--improvements--personal experiences]

[Article in German]

[Reiss M](#), [Reiss G](#).

HNO-Klinik, Städtisches Klinikum Görlitz, Universitätsklinikum Dresden.

Bibliography database managers are used to manage information resources: specifically, to maintain a database of references and create bibliographies and reference lists for written works. A good reference management program should make it easy to read and to record the elements that a reference comprises, e.g. authors name, year of publication, title of article etc. It should offer tools that let you find and retrieve references quickly, and it should be able to produce the bibliography in the format required for a particular publication. You can create your database reference by reference or you can download batches of references from one of the popular searching services (e.g. MEDLINE) and you can search in the Internet. When you want to cite a reference you simply paste the reference wherever you want your in-text citation to appear. There are many computer programs, but very few stand out as truly useful, time saving, and work enhancing. One of them is EndNote. The reference manager EndNote 5.0 was recently released in Germany. As long-time fans of this excellent program, we upgraded from the previous version. The use of the software package EndNote 5.0 for Windows is described. The main reason for getting EndNote 5.0 is its clearly improved functions and features: especially the co-operation with Microsoft Word (cite while you write) and the spelling examination. Altogether EndNote 5.0 provides also an excellent combination of features and ease of use.

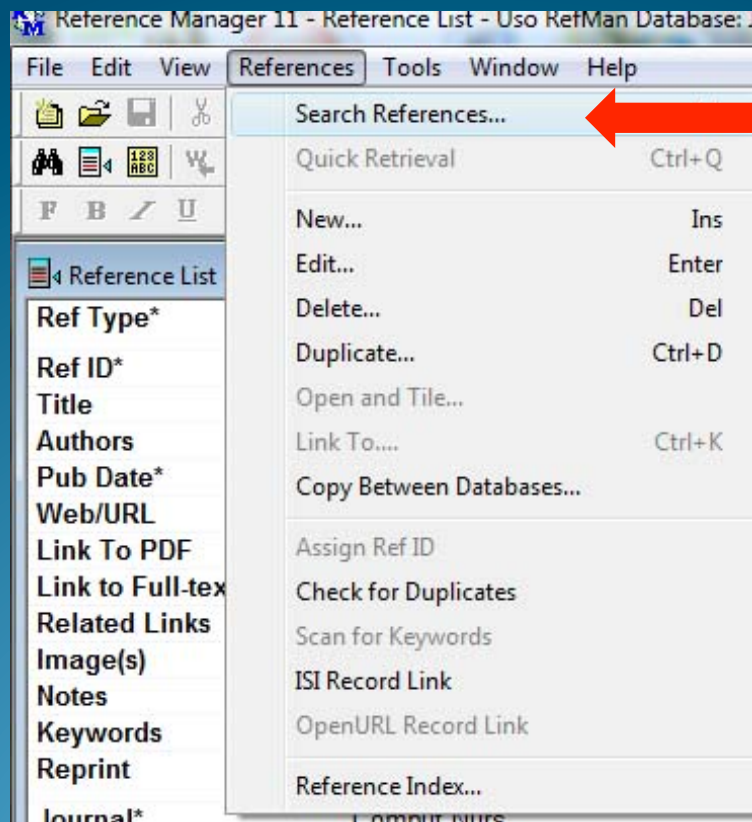
PMID: [12405033](#) [PubMed - indexed for MEDLINE]



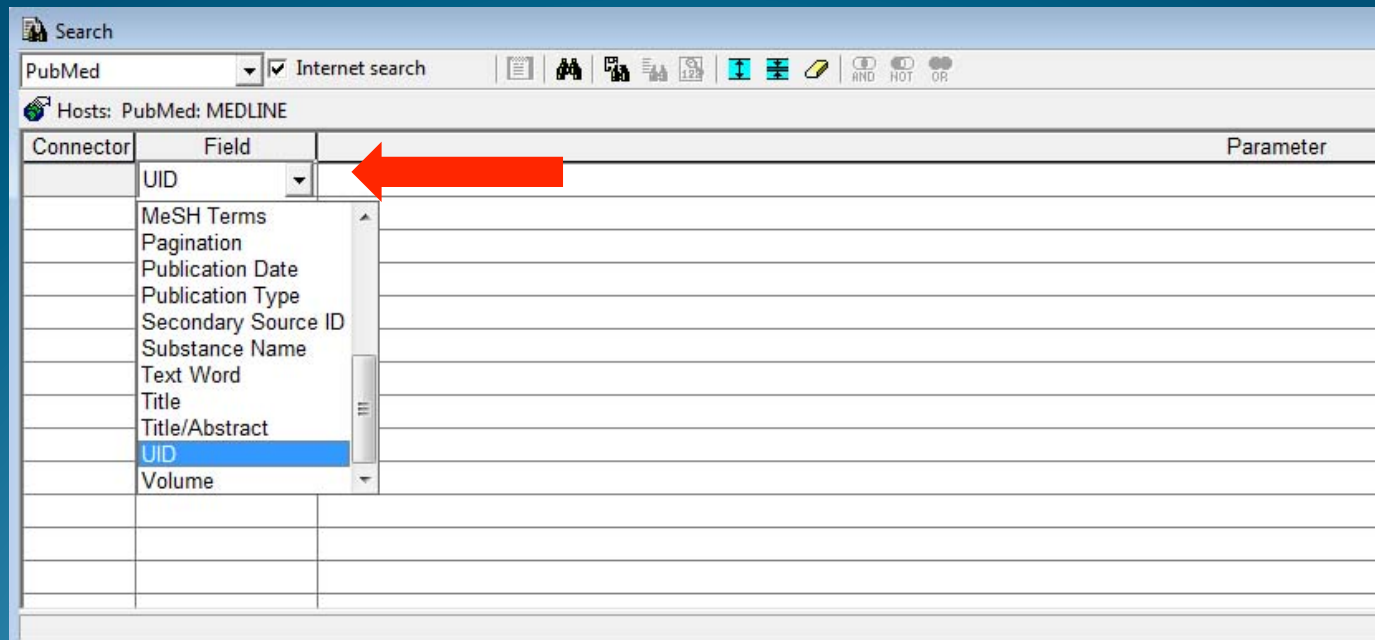
UID (PMID)



# Efectuando la Recuperación desde PubMed



# Seleccionando la opción de Campo (Field)





# Cita recuperada

The screenshot displays the Reference Manager 11 interface. The main window shows a reference list with the following details:

**Ref Type\***: Journal  
**Ref ID\***: 1  
**Title**: Bibliography database managers. A comparative review  
**Authors**: Nicoll, L.H.; Ouellette, T.H.; Bird, D.C.; Harper, J.; Kelley, J.;  
**Pub Date\***: /01/1996  
**Other**:  
**Web/URL**:  
**Link To PDF**:  
**Link to Full-text**:  
**Related Links**:  
**Image(s)**:  
**Notes**: Edmund S Muskie Institute of Public Affairs, University of Southern Maine, Po  
**Keywords**: Bibliography as Topic; Database Management Systems; Humans; organizatio  
**Reprint**: Not in File 02/04/09  
**Journal\***: Comput. Nurs.  
**Volume**: 14  
**Issue**: 1

Below the details is a table with the following data:

Ref ID	Authors	Title
1	Nicoll, L.H.	Bibliography database managers. A comparative review

Two red arrows point from the bottom of the table to the 'Imported' tab in the taskbar.

Overlaid on the main window are two dialog boxes:

- Import**: A small dialog box with a yellow warning icon and the text "Import successfully completed." and an "Aceptar" button.
- Import Text File**: A larger dialog box showing a list of metadata fields and values:  
EMID- 8605660  
OWN - NLM  
STAT- MEDLINE  
DA - 19960522  
DCOM- 19960522  
LR - 20071115  
IS - 0736-8593 (Print)  
VI - 14  
IP - 1  
DP - 1996 Jan-Feb  
TI - Bibliography database managers. A comparative  
PG - 45-56  
At the bottom of this dialog are buttons for "Yes", "Yes to All", "No", and "Cancel", and a progress bar.

# Cita en la Base de Datos

Reference List - Uso RefMan Database: Journal Reference ID 1

Ref Type\* Journal  
Ref ID\* 1  
Title Bibliography database managers. A comparative review  
Authors Nicoll,L.H.; Ouellette,T.H.; Bird,D.C.; Harper,J.; Kelley,J.;  
Pub Date\* /01/1996 Other  
Web/URL  
Link To PDF  
Link to Full-text  
Related Links  
Image(s)  
Notes Edmund S Muskie Institute of Public Affairs, University of Southern Maine, Portland 04103, USA Inicoll@mainemaineduFAU - Nicoll, L H  
Keywords Bibliography as Topic; Database Management Systems; Humans; organization & administration; Software Validation;  
Reprint Not in File 02/04/09  
Journal\* Comput.Nurs.  
Volume 14  
Issue 1

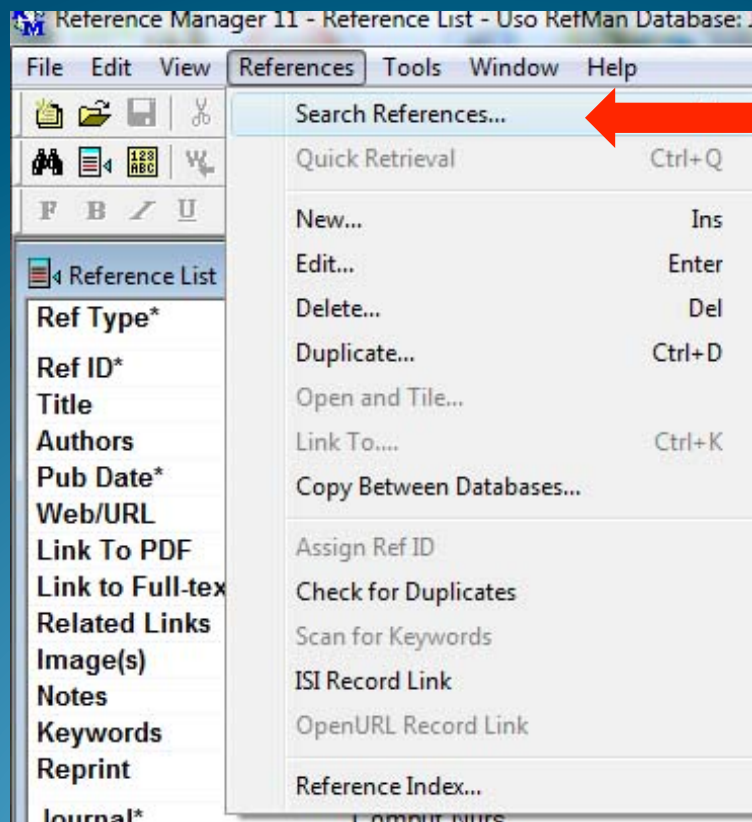
Ref ID	Authors	Title
<input type="checkbox"/> 1	Nicoll,L.H.	Bibliography database managers. A comparative review
<input type="checkbox"/> 2	Reiss,M.	[EndNote 5 reference manager-functions-improvements-personal experiences]

0 Marked Reference 1 of 2

# Otras funciones en RefMan

- Realizar una búsqueda interna con parámetros como Autor, Keywords, etc.
- Dar formato a la lista Bibliográfica
- Crear una Referencia propia
  - Libro
  - Material Audiovisual
  - URL
  - Comunicación personal

# Búsqueda interna



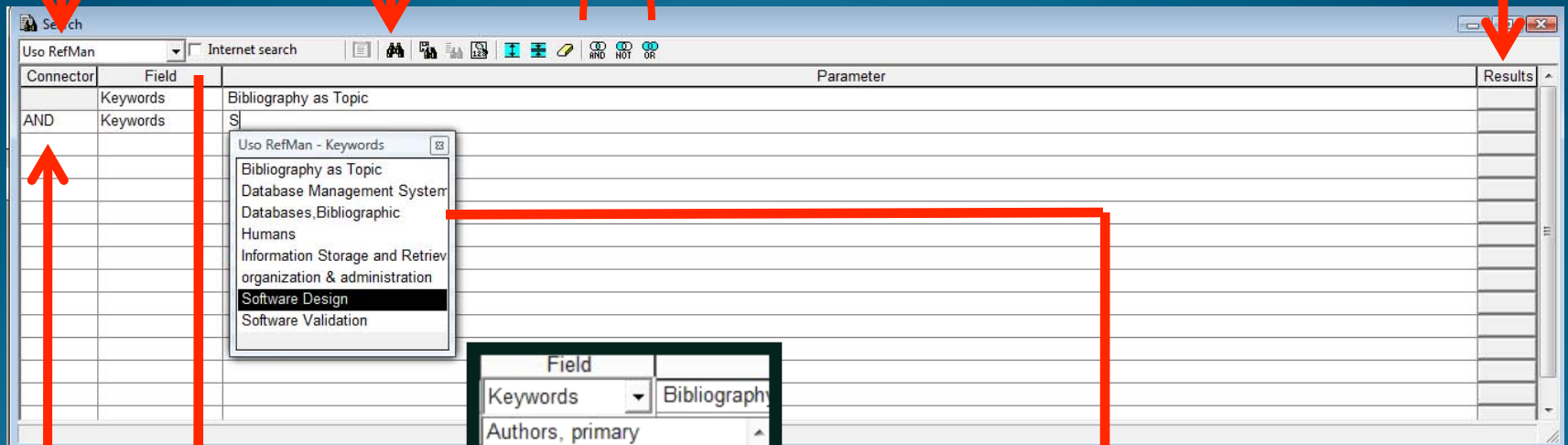
# Búsqueda interna

Seleccionar Base Datos

Iniciar proceso

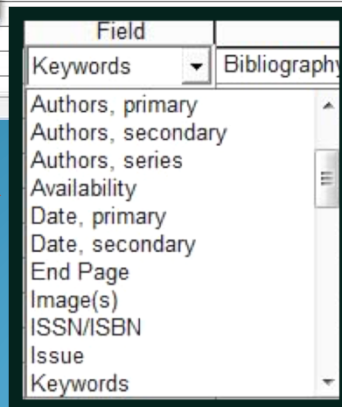
Elegir Conector Lógico

Referencias Recuperadas



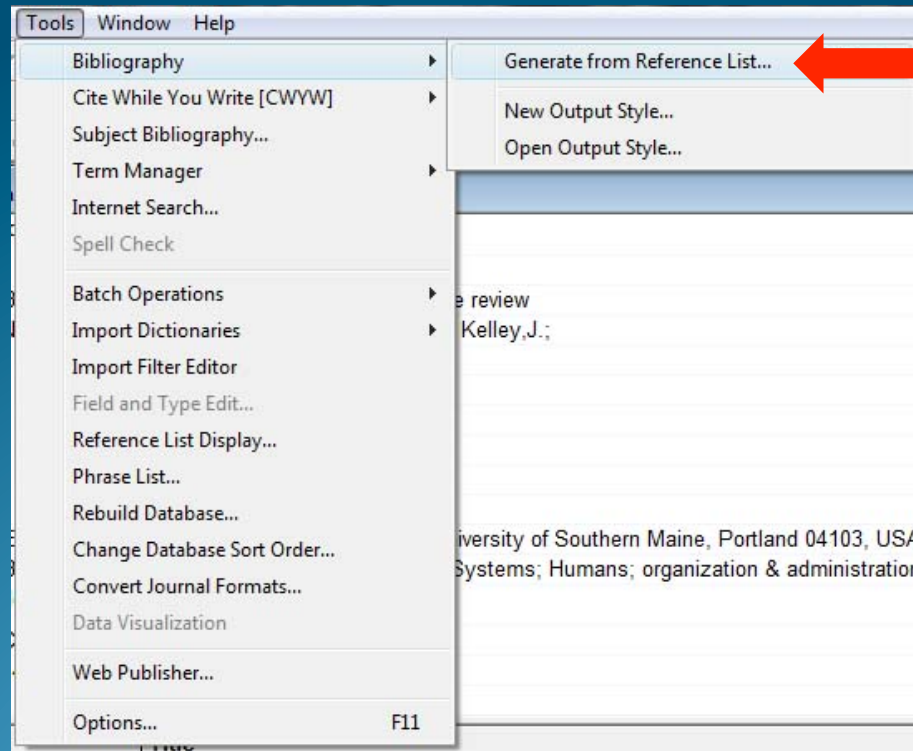
Conector Seleccionado

Lista popup de parámetros existentes en la Base de Datos

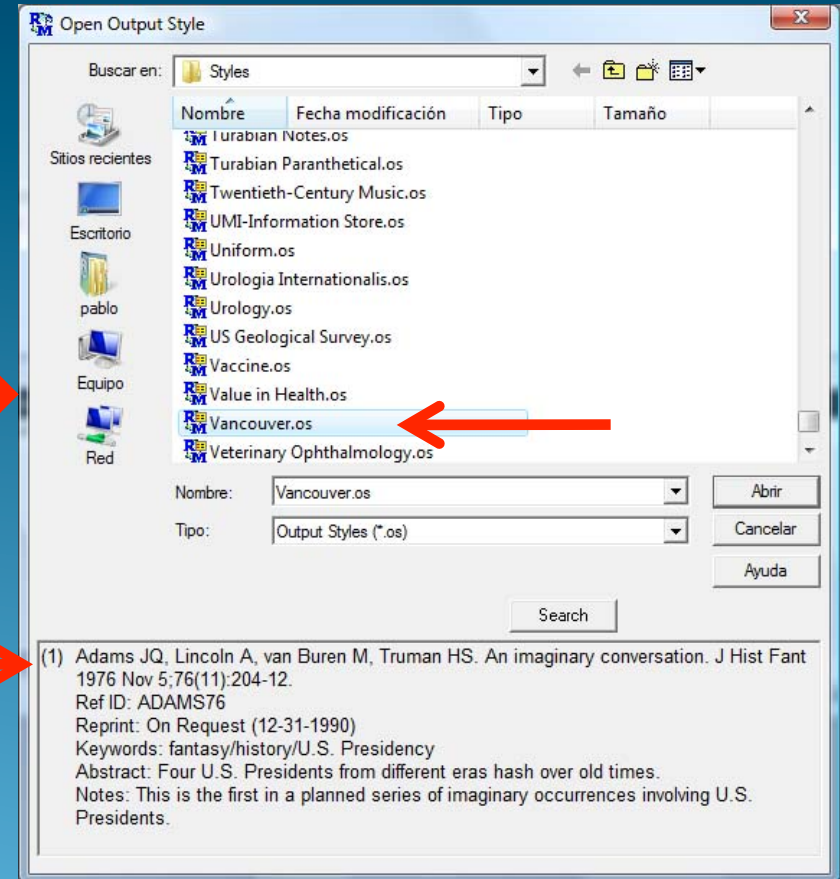
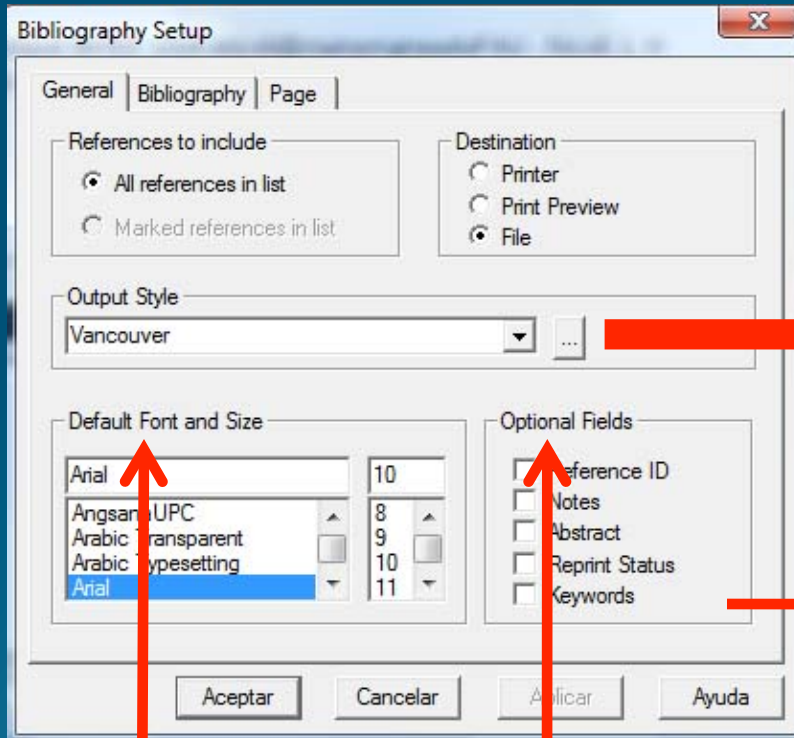




# Formato lista Bibliográfica



# Eligiendo el Estilo



Opciones

Estilo y tamaño Fuente

# Título de Lista Bibliográfica

Bibliography Setup

General Bibliography Page

Bibliography Title

Bibliografía

Numbering

Number References, Beginning With: 1

Prefix: ( Suffix: ) - Alignment: Right

Indentation

First Line: 0,000 in

Hanging: 0,000 in

Spacing

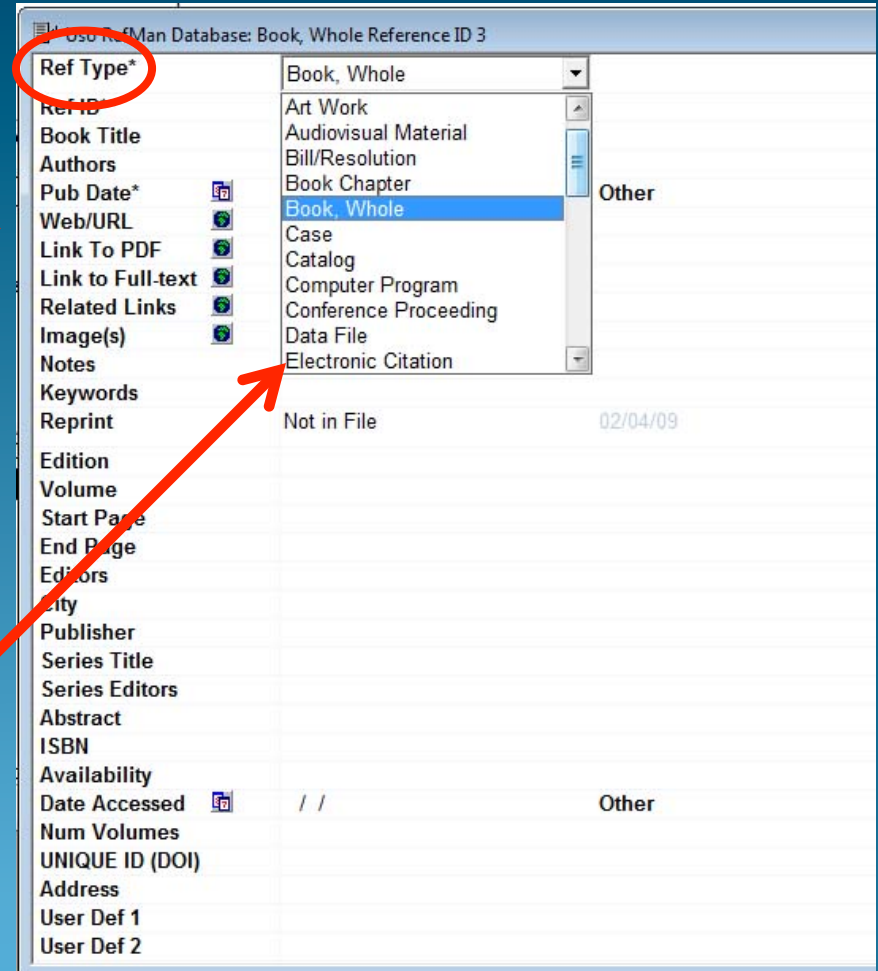
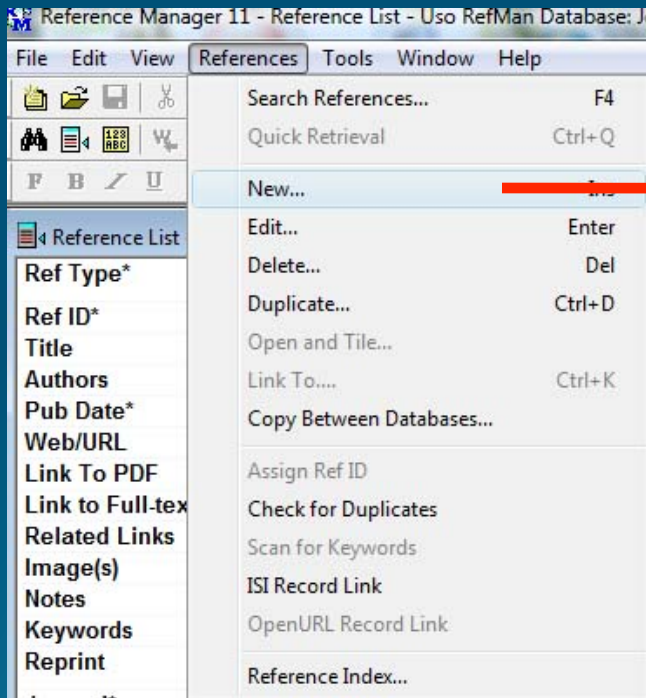
Line Spacing: Single

Space After: Single

Reset from Output Style

Aceptar Cancelar Aplicar Ayuda

# Crear una Referencia



Popup para elegir el tipo de Referencia. Los campos corresponden al tipo elegido

# Integrando MSWord y RefMan



CWYW

\* CWYW: Cite While You Write

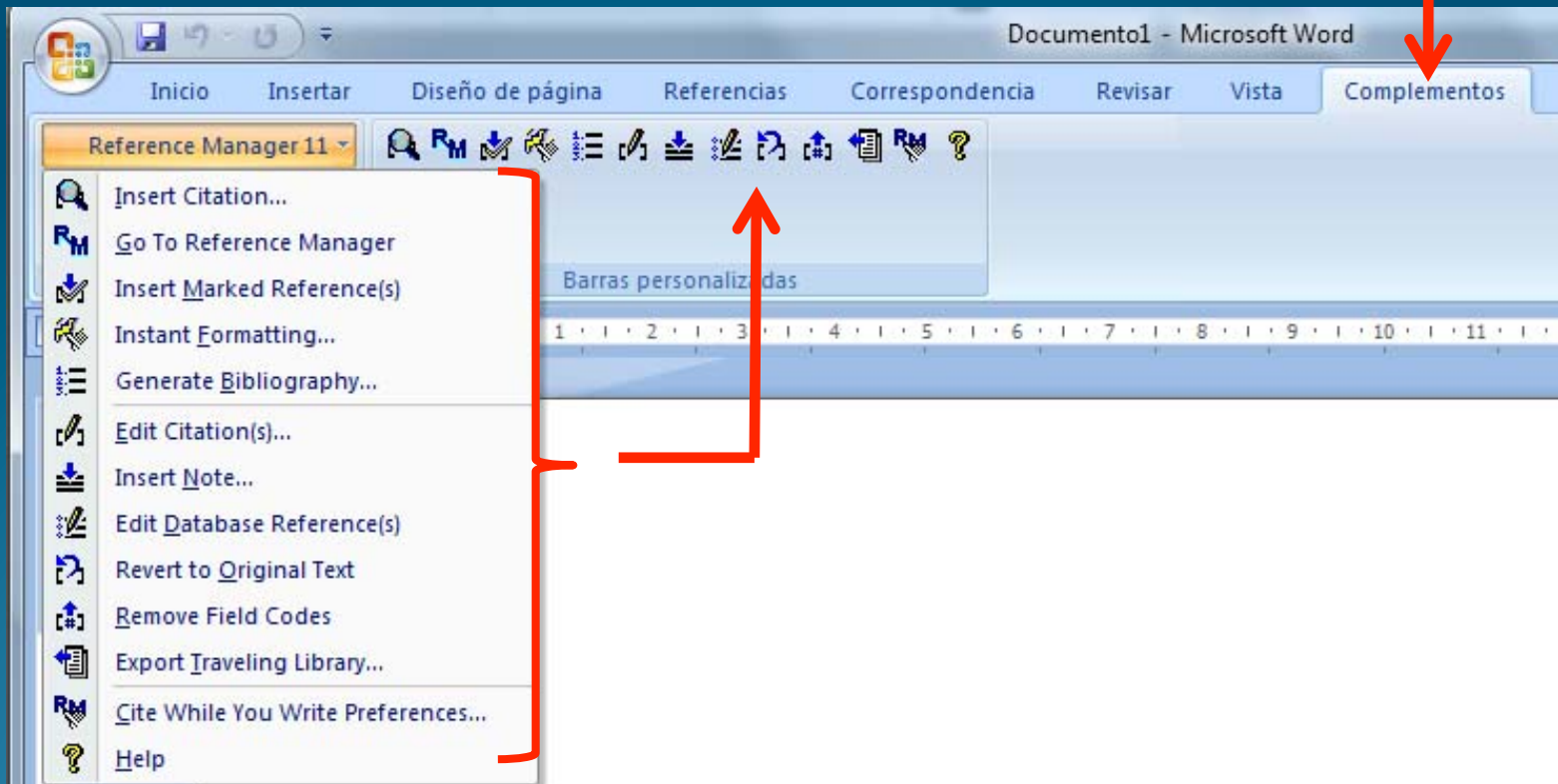
# Integrando MSWord y RefMan

- Al instalar el RefMan se integra con el MS Word (Complementos)
- Leer en “Support” del sitio como instalar manualmente los complementos en MS Word
- Manual online en la página del Producto

# Integrando MSWord y RefMan

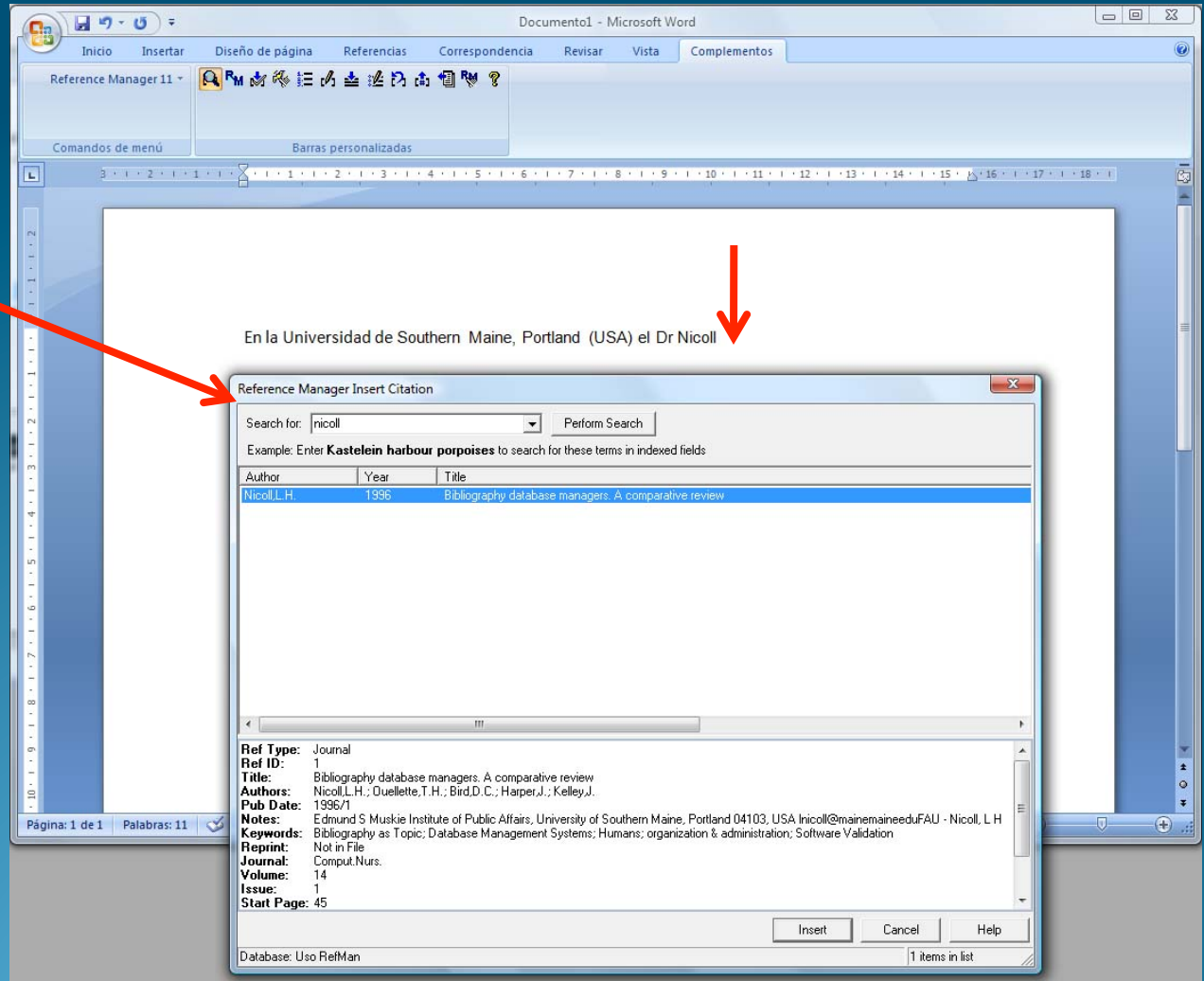
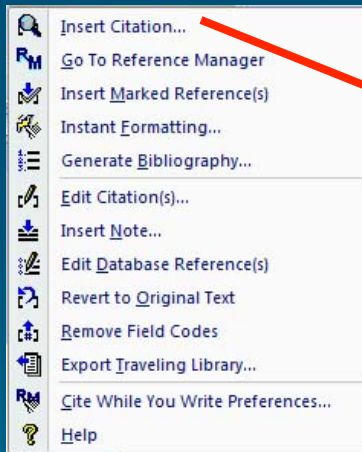
- Abiertos ambos programas es posible insertar las citas en el texto,
- visualizando las mismas en el RefMan,
- y generando automáticamente las Referencias Bibliográficas al final del documento.

# Herramientas de RefMan





# Insertando mientras se escribe



# Generando Bibliografía

The screenshot shows the Microsoft Word interface with the Reference Manager ribbon selected. The ribbon includes options like 'Reference Manager 11', 'Comandos de menú', and 'Barras personalizadas'. The main document area contains text in Spanish and a 'Reference List' section. A red arrow points from the 'Generate Bibliography...' option in the left-hand menu to the 'Reference Manager Generate Bibliography' dialog box. The dialog box is open, showing settings for the bibliography, including 'Output style' (Vancouver), 'Font' (Calibri), 'Size' (11), and 'Bibliography title' (Bibliografía). The 'Number bibliography, starting with:' checkbox is checked and set to 1. The 'Acceptar', 'Cancelar', and 'Ayuda' buttons are visible at the bottom of the dialog.

En la Universidad de Southern Maine, Portland (USA) el Dr. [redacted]  
comparativo de los diferentes programas para insertar citas b

Ultimamente en Universitätsklinikum, Dresden (Alemania) el Dr. [redacted]  
las prestaciones del programa EndNote.]

Reference List

- (1) Nicoll LH, Ouellette TH, Bird DC, Harper J, Kelley J. Bibliographic comparative review. *Comput Nurs* 1996 Jan;14(1):45-50
- (2) Reiss M, Reiss G. [EndNote 5 reference manager—functional experiences]. *Praxis (Bern)* 1994;2002 Oct 2;91(40):16

Página: 1 de 1 Palabras: 84 Español (Argentina) 116%

- Insert Citation...
- Go To Reference Manager
- Insert Marked Reference(s)
- Instant Formatting...
- Generate Bibliography...
- Edit Citation(s)...
- Insert Note...
- Edit Database Reference(s)
- Revert to Original Text
- Remove Field Codes
- Export Traveling Library...
- Cite While You Write Preferences...
- Help

# Aspecto final

En la Universidad de Southern Maine, Portland (USA) el Dr Nicoll (1) efectuó un estudio comparativo de los diferentes programas para insertar citas bibliográficas.

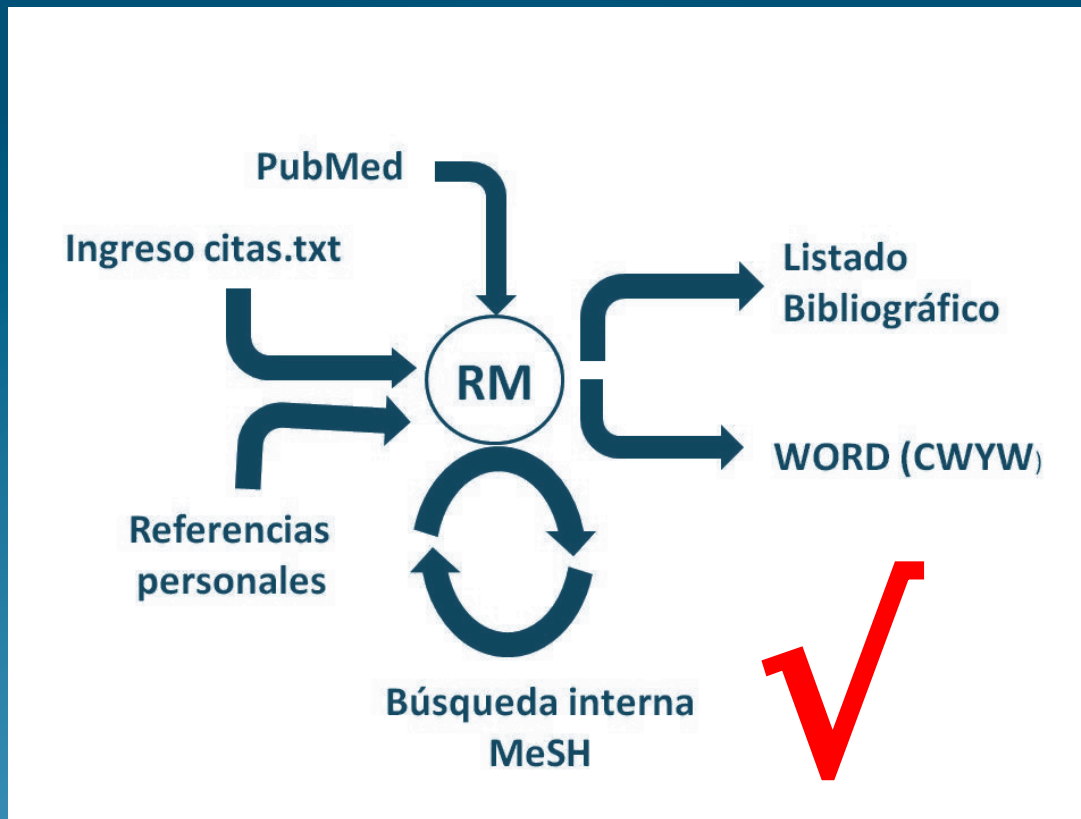
Ultimamente en Universitätsklinikum,Dresden (Alemania) el Dr. Reiss (2) efectuó un reporte sobre las prestaciones del programa EndNote.]

## Bibliografía

- (1) Nicoll LH, Ouellette TH, Bird DC, Harper J, Kelley J. Bibliography database managers. A comparative review. *Comput Nurs* 1996 Jan;14(1):45-56.
- (2) Reiss M, Reiss G. [EndNote 5 reference manager--functions--improvements--personal experiences]. *Praxis (Bern 1994)* 2002 Oct 2;91(40):1645-50.



# Circuito de las Referencias Bibliográficas



# Mensaje final

- Sabiendo lo que hace (utilidad)
- Es simple aprenderlo (prueba error)
- Y fijarlo con su uso repetido
- Solicitar una copia del Tutorial y ensayar
- O ...



**KEEP  
CALM  
AND  
ASK FOR  
HELP**

Dr. Pablo Mingote  
[pmingote@speedy.com.ar](mailto:pmingote@speedy.com.ar)